



TREASURE OF BELGIUM & HOLLAND

8 DAYS | 2 COUNTRIES 📍 Brussels to Amsterdam

Package Include:

- Spacious Stateroom
- Breakfast, lunch, and dinner on board daily
- Sightseeing with Certified Local Guides
- Happy Hour every evening
- Shore Excursion
- Cruise Fare, Port Charge, Gratuity



Excluded : Air Ticket, Visa, Transfer round trip

- Day 1 **Brussels (Embarkation)**: Onboard welcome reception
 Day 2 **Ghent**: Choice of guided tour or biking with your Adventure Host
 Day 3 **Ghent**: Visit to Flanders Field Museum in Ypres; visit to the battlefields; Last Post Ceremony at the Menin Gate
 Day 4 **Middelburg–Veere**: Guided tour in Middelburg; biking with your Adventure Host from Middelburg to Veere; guided walking tour of Veere
 Day 5 **Kinderdijk–Rotterdam**: Choice of guided tour in Kinderdijk or biking with your Adventure Host; harbour cruise in Rotterdam; choice of guided tour in Rotterdam or biking with your Adventure Host
 Day 6 **Zaandam–Haarlem**: Free time in Zaandam; choice of guided tour in Haarlem or biking with your Adventure Host
 Day 7 **Amsterdam**: Choice of canal cruise, biking tour, or off-the-beaten-path walking tour
 Day 8 **Amsterdam (Disembarkation)**: Your cruise ends this morning

เดินทาง: 05 - 12 Apr 2026

Deluxe Stateroom: @USD4,176 แลือเพียง @USD 3,426

Panorama Stateroom: @USD5,975 แลือเพียง @USD 5,225



AVALON EUROPEAN SUITE SHIPSSM

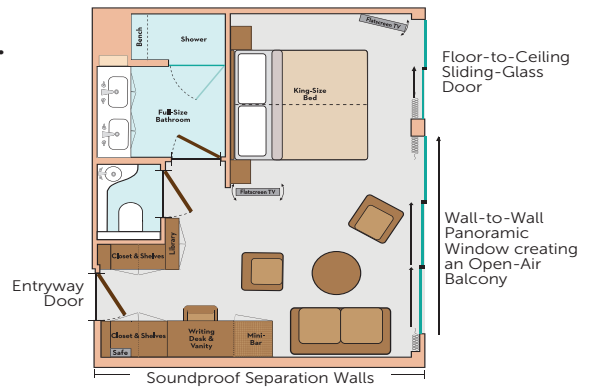
ROYAL SUITES, PANORAMA SUITESSM & DELUXE STATEROOMS

STATEROOM AMENITIES

- Comfort Collection BedsSM, featuring premium memory foam mattress toppers with special construction for increased airflow and ventilation and a choice of four firmness selections – from extra firm to pillow-top soft
- Egyptian super-combed cotton linens, blankets, & European-style duvets
- Soft & firm pillows
- Choice of bed configuration – two twins or one queen or (Royal Suite only) one king
- Nightly turn-down service
- Bathrobes & slippers
- Bedside tables with reading lamps
- Large private bathroom featuring full shower with glass door, hairdryer and premium L'Occitane® bath products
- Spacious 3-door closets with shelves for ample storage
- Easy under-bed luggage storage
- Flatscreen satellite TV with movie channel and built-in alarm clock
- Writing desk/vanity with mirror & comfortable chair
- Complimentary Wi-Fi access
- Direct-dial telephone
- Well-stocked minibar
- USB Ports
- In-room safe
- Individual climate control
- Continental breakfast, lunch, dinner, and beverage room service available
- 11' Wall-to-Wall Panoramic Window—50% wider than industry standard (Panorama and Royal Suites only)
- Wall-to-Wall Panoramic Window opens to create a large Open-Air BalconySM (Panorama and Royal Suites only)

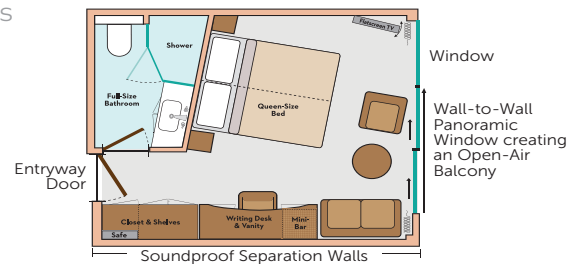
ROYAL SUITES

300 SQ. FT.
ROYAL DECK



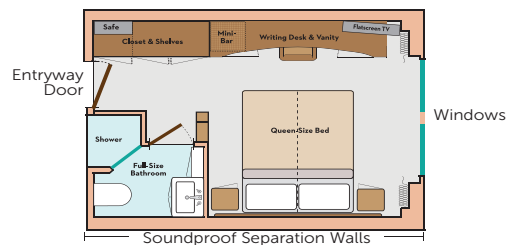
PANORAMA SUITESSM

200 SQ. FT.
ROYAL & SAPPHIRE DECKS
Category B, A, P



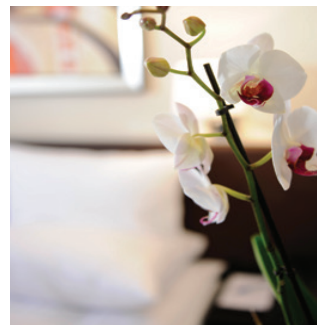
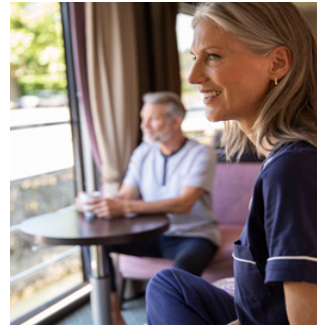
DELUXE STATEROOMS

172 SQ. FT.
INDIGO DECK
Category D & E



SUITES & STATEROOMS.

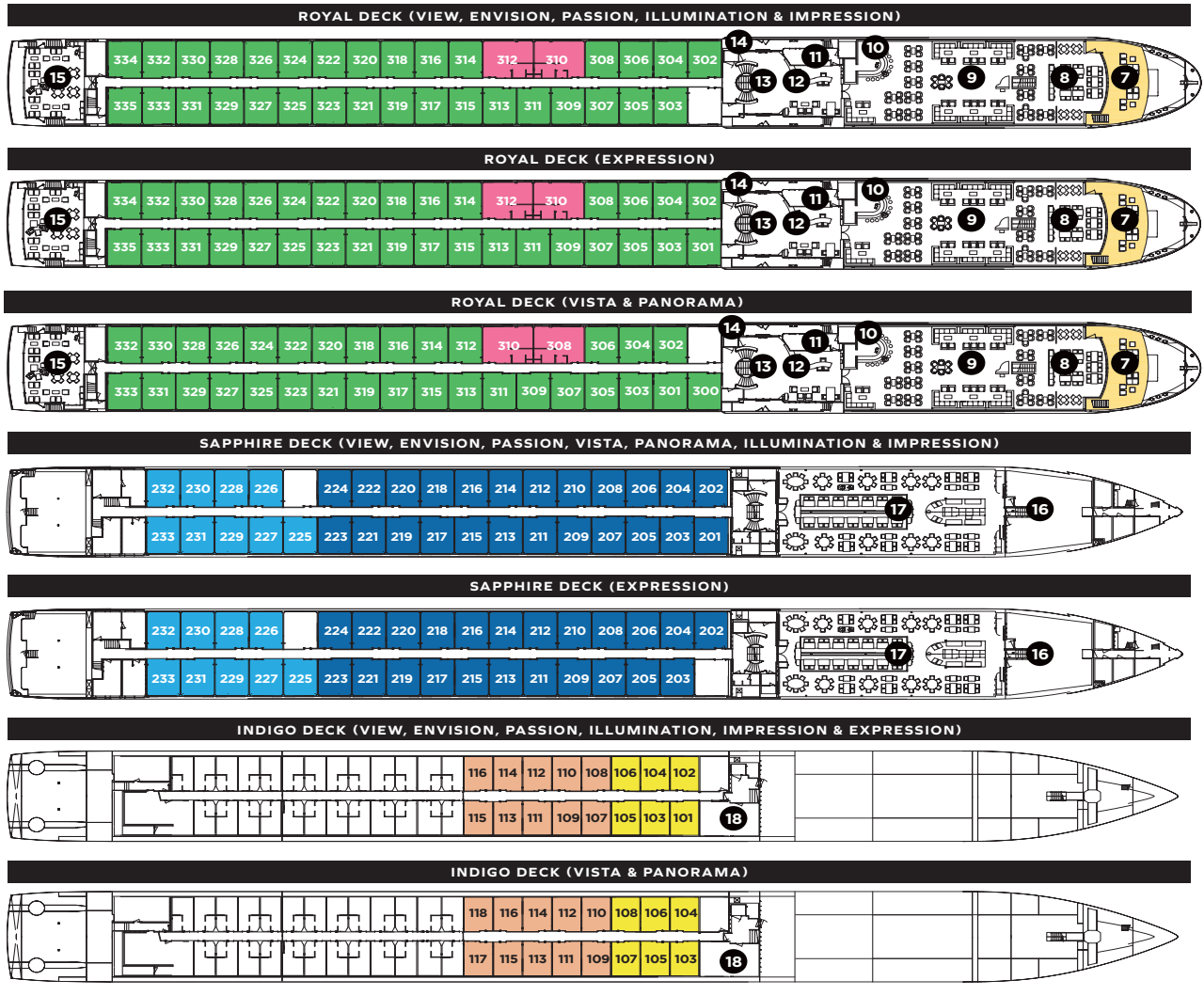
From spacious to cozy, you'll find the perfect space to dream. A Royal Suite or Deluxe Stateroom offers an alternative floor plan, yet with all the standard amenities of a Panorama Suite. Our Royal Suite creates 300 square feet of phenomenal, including our award-winning Open-Air Balcony. At 172 square feet, our Deluxe Staterooms are still 20% larger than the industry standard.



AVALON EUROPEAN SUITE SHIPSSM

**AVALON VIEW® (2022), AVALON ENVISION® (2019), AVALON PASSION® (2016),
AVALON ILLUMINATION® (2014), AVALON IMPRESSIONSM (2014),
AVALON EXPRESSION® (2013), AVALON VISTASM (2012), AVALON PANORAMASM (2011)**

Passengers: 166 | Crew Members: 47 | Length: 443 ft. | Decks: 4
Royal Suites: 2 (300 sq. ft.) | Panorama SuitesSM: 65 (200 sq. ft.) | Deluxe Staterooms: 16 (172 sq. ft.)



DECK PLAN

- | | | |
|----------------------|---------------------|-------------------------|
| 7 Observation Lounge | 10 Bar | 15 Club Lounge |
| 8 Panorama Bistro | 11 Guest Services | 16 Galley |
| 9 Panorama Lounge | 12 Adventure Center | 17 Panorama Dining Room |
| | 13 Lobby | 18 Fitness Center |
| | 14 Elevator | |

CATEGORIES

- | | |
|--------------------|---|
| ROYAL SUITE | Royal Deck Royal Suites |
| CAT. P | Royal Deck Panorama Suites |
| CAT. A | Sapphire Deck Forward Panorama Suites |
| CAT. B | Sapphire Deck Aft Panorama Suites |
| CAT. D | Indigo Deck Aft Deluxe Staterooms |
| CAT. E | Indigo Deck Forward Deluxe Staterooms |